

e360 ROM Upgrade Guide

1. Driver, Tool and upgrade version

Unzip all the zip files, you will see the following file folders.

- 1.Drive_qud.win.1.1_installer_10040.5
- 2.QPST.win.2.7_installer_00480.14
- 3.e360V1.0.0B04

2. Install e360 driver

Open Driver_qud.win.1.1_installer_10040.5, install the driver



After installation restart the computer.

3. Install the tool QFIL in QPST.win.2.7_installer_00480.14



Open the file folder

QPST.win.2.7_installer_00480.14

Run **QPST.2.7.480.exe**

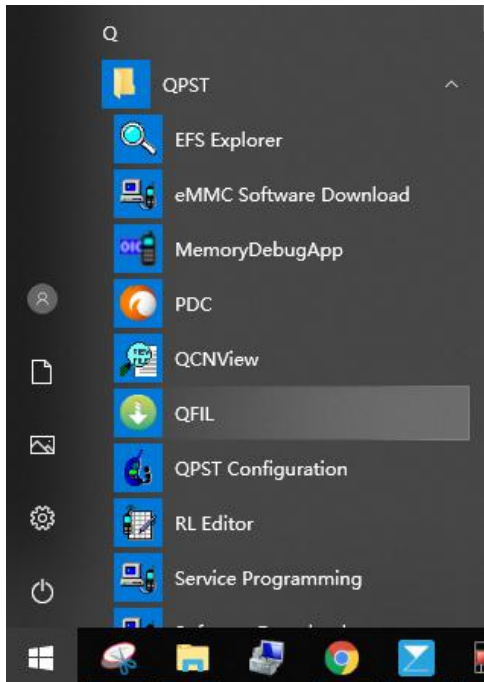


4. Check the device port in your PC

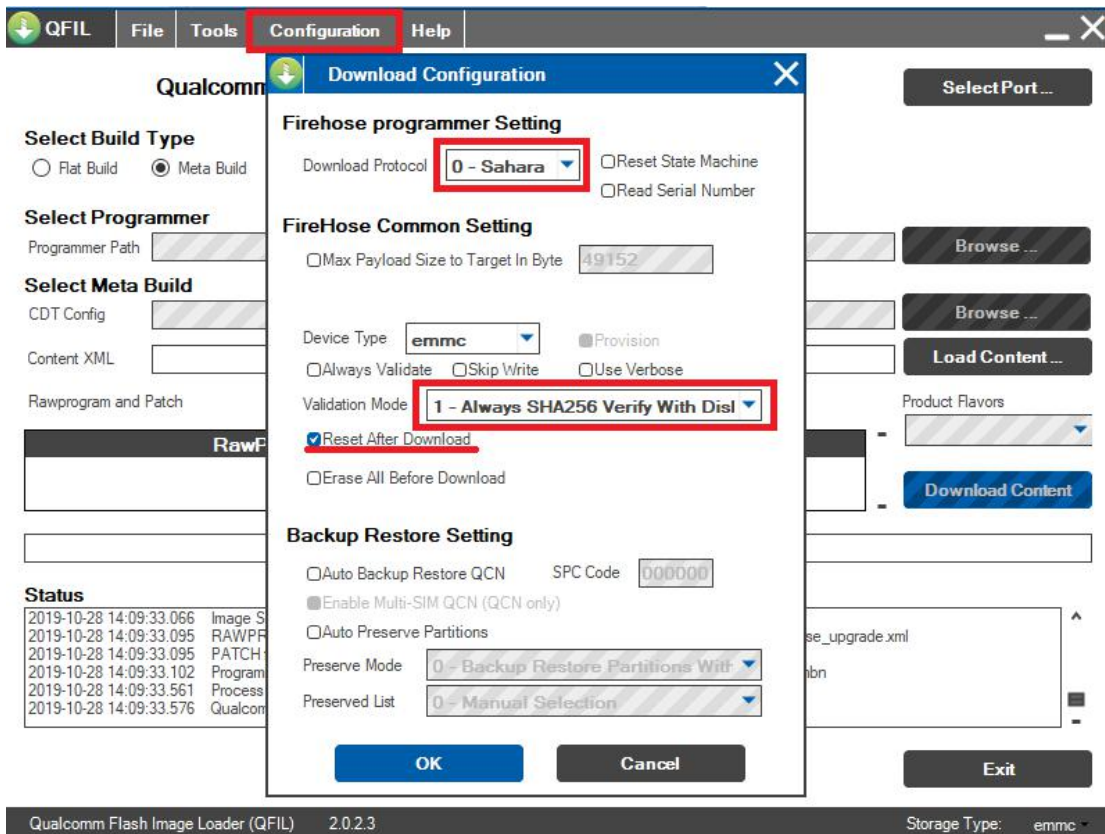
Switch off e360, press and hold **F1** button  and **Power** button  at same time you will see the eChat logo flash past in the screen and the Green LED light on. Then connect e360 to your PC. You will find the port available in your Windows device management. For example COM4.

- ▼  Ports (COM & LPT)
 -  Qualcomm HS-USB QDLoader 9008 (COM4)

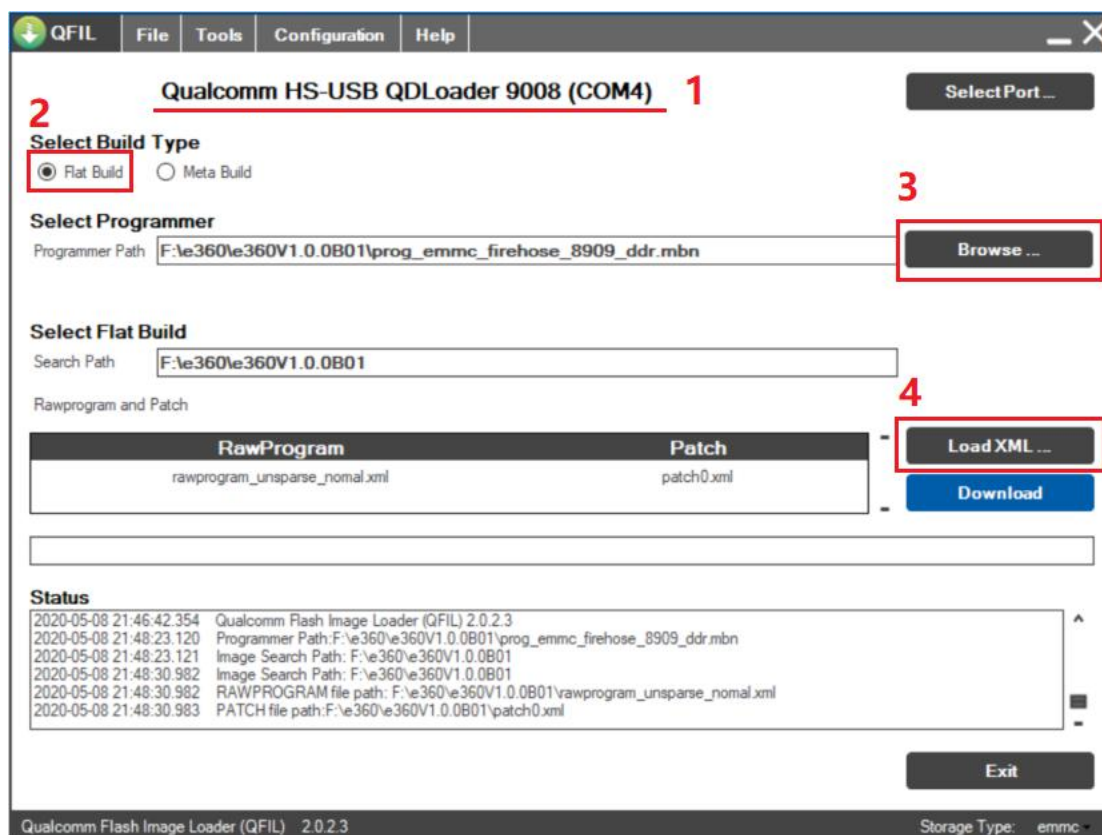
5. Open QFIL in your QPST



6. Click Configuration and set as follows, then click OK



7. You will see Port QDLoader 9008 as follows



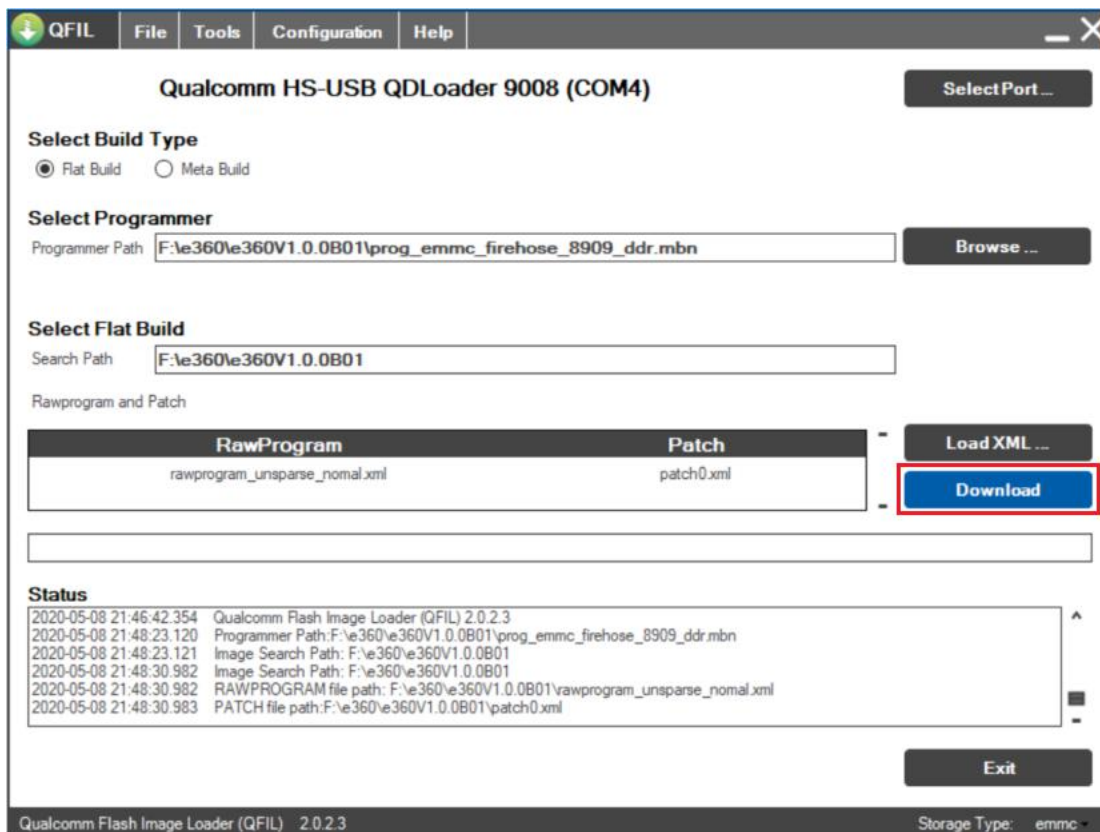
Set as the above marked 2, 3, and 4.

2: choose **Flat Build**

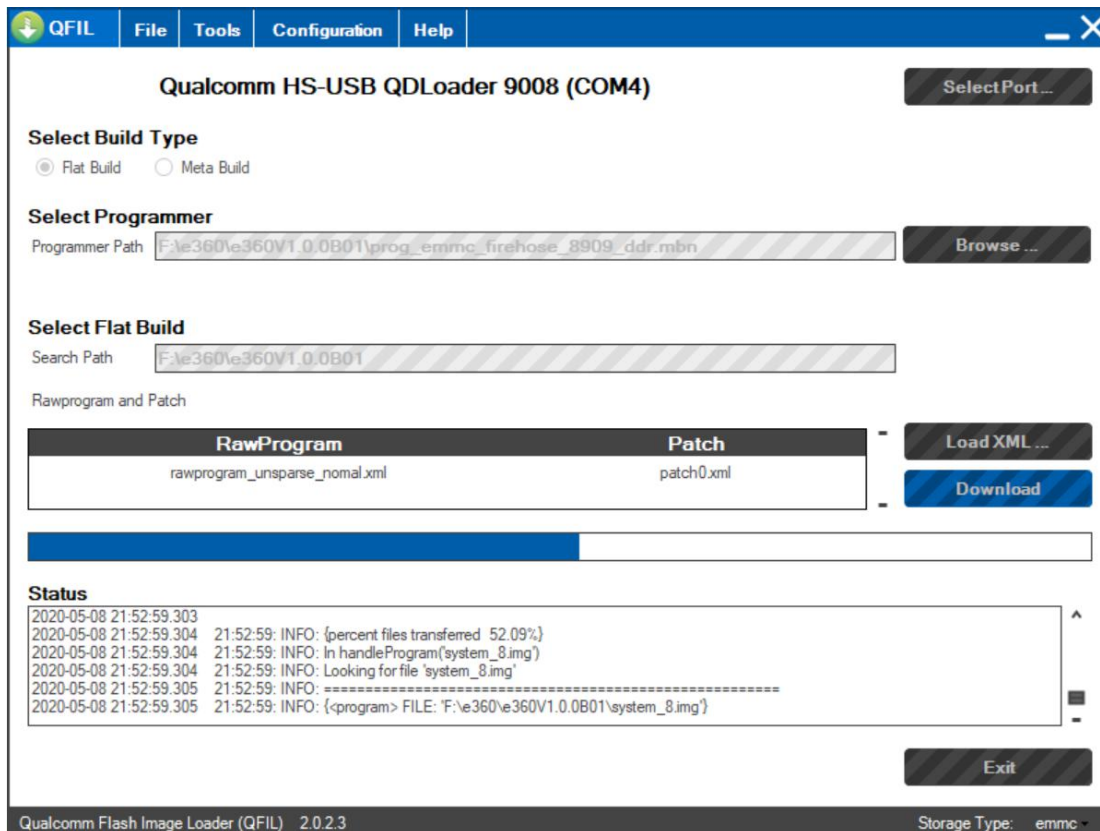
3: Click Browser, choose **prog_emmc_firehose_8909_ddr.mbn** in the upgrade version file folder "e360V1.0.0B04"--> **prog_emmc_firehose_8909_ddr.mbn**

4: Click Load XML, choose **rawprogram_unsparse_nomal.xml** in in the upgrade version file folder "e360V1.0.0B04"--> **rawprogram_unsparse_nomal.xml**, then load **patch0.xml**

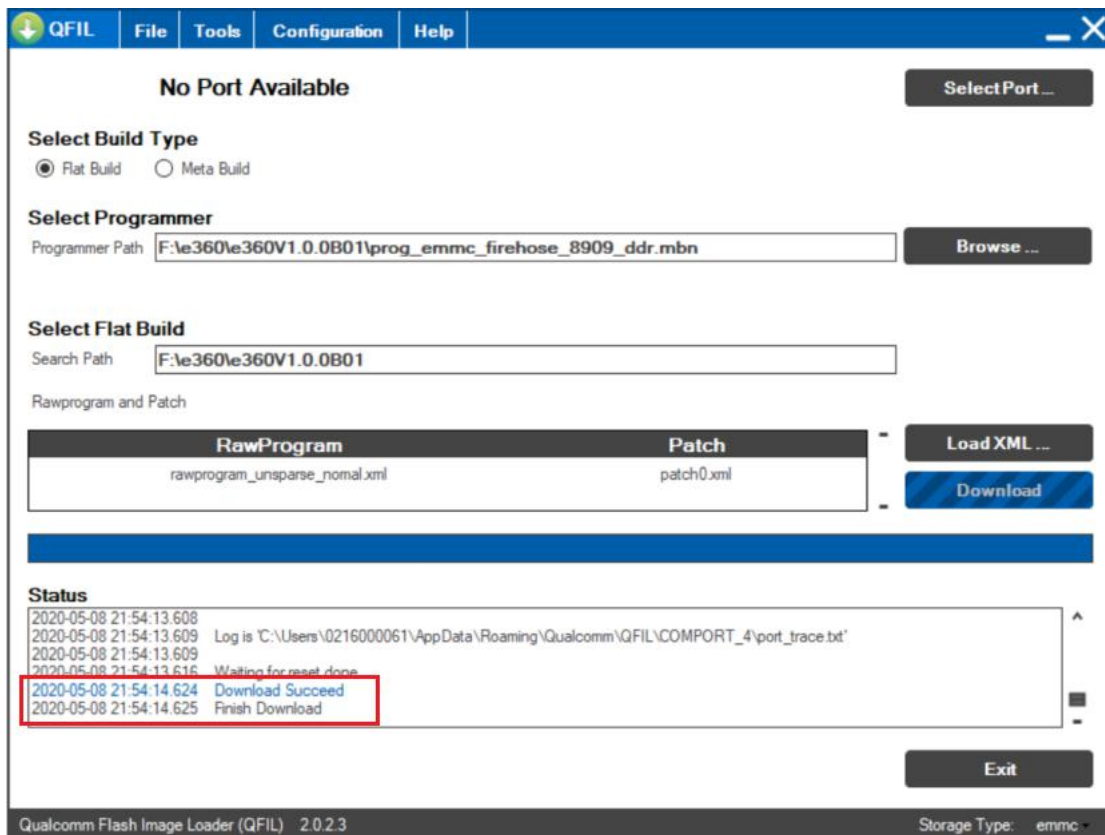
8. Click Download



You will see the software is under upgrade.



9. Finish the upgrade



10. If you would like to upgrade second e360, repeat step 8.